



# Facilities List

## REAL ESTATE

**LOCATION ONE – 60,000 S.F.**

- Indoor Dock
- 10 TON CRANE/HOIST

**LOCATION TWO – 11,500 S.F.**



## CNC MACHINING CENTERS

### **HORIZONTAL MACHINING CENTER**

- 1 **MAKINO A77 4-Axis** CNC Horizontal Machining Center With Pallets, 31" x 29" x 30" (X) (Y) (Z)



### **VERTICAL MACHINING CENTERS**

- 1 **HAAS VF-9** CNC Vertical Machining Center, 84" x 40" x 30" (X) (Y) (Z)
- 1 **DAEWOO DMC-850V** CNC Vertical Machining Center, 70" x 33" x 33" (X) (Y) (Z)
- 1 **HAAS VF-6** CNC Vertical Machining Center, 64" x 32" x 30" (X) (Y) (Z)
- 1 **HAAS VF-4** CNC Vertical Machining Center, 50" x 20" x 25" (X) (Y) (Z)
- 1 **FADAL 40-20** CNC Vertical Machining Center, 40" x 20" x 20" (X) (Y) (Z)
- 1 **MATSUURA MC-760VX** CNC Vertical Machining Center, 30" x 17" x 19" (X) (Y) (Z) with Pallet Changer
- 1 **LEBLOND MAKINO FNC-74** CNC Vertical Machining Center, 27" x 17" x 17" (X) (Y) (Z)
- 3 **CNC Rotary Tables (4th Axis)**



Main Plant: 6401 CORNHUSKER HWY.  
LINCOLN NEBRASKA 68507

Mailing Address: P.O. BOX 29798  
LINCOLN, NEBRASKA 68529

402•434•9140  
FAX 402•434•9160  
[www.lincolnmachine.com](http://www.lincolnmachine.com)



# Facilities List

## CNC TURNING CENTERS

### TWO AXIS LATHES

- 1 **OKUMA LB25II** CNC Turning Center  
24.4" Swing
- 2 **OKUMA CROWN SB** CNC Turning Centers  
21.6" Swing, with Bar Feeders



### FIVE AXIS LATHE

- 1 **OKUMA LU15M** CNC Turning Center  
15" swing, 2-3/4" diameter through the headstock, live tooling

### 8 AXIS LATHE

- 1 **DAEWOO PUMA TT2500 SY** High Performance  
31.5" swing, 15.4" Max Turning Diameter,  
Dual Spindles and Turrets, Live Milling



## EDM EQUIPMENT

### RAM EDM

- 1 **MITSUBISHI EA8** CNC Ram EDM, 3R System Automatic Tool  
Changer with 16 Tools  
12" x 10" x 10" (X) (Y) (Z)

### WIRE EDM

- 1 **CHARMILLES, ROBOFIL 440** CNC Submerged  
Wire EDM, 3R Tooling,  
21.65" x 13.77" x 15.75" (X) (Y) (Z)  
(30° taper up to 15.75" thick)
- 1 **CHARMILLES, ROBOFIL 240CC** CNC Submerged  
Wire EDM, 3R Tooling,  
13.77 x 8.66 X 8.66" (X) (Y) (Z) (30° taper up to 8.66" thick)





# Facilities List

## COORDINATE MEASURING MACHINES

- 1 **BROWN & SHARPE** Chameleon 122010 CNC,  
47" x 78" x 39" (X) (Y) (Z)
- 1 **MITUTOYO B231**  
28" x 24" x 18" (X) (Y) (Z)
- 1 **FAROARM-PLATINUM** Portable CMM  
Accuracy to .0005



## TOOL ROOM EQUIPMENT

- 14 **BRIDGEPORT Milling Machines**,  
Power Feed, Digital Readout, 18" x 36" Travel  
(4 with EZ TRAK)
- 14 **Engine Lathes**, 36" Maximum Swing, 157" Long
- 1 **TUDA "Jumbo" Lathe**, Model 1250 x 5000,  
Swing Over Bed 49.2" to 16.3' long,  
Gap 65" x 20"
- 1 **HITACHI Mill**, 40" x 14" Travel, with Universal head
- 5 **Precision Surface Grinders**, 20" x 40" Range of travel
- 2 **Cylindrical Grinders**, 12" Dia. x 48", OD and ID



## FABRICATION AND REPAIR

- 3 Heliarc and Mig Welders
- 1 Plasma Cutter
- 1 HMI Ironworker #35-19



Main Plant: 6401 CORNHUSKER HWY.  
LINCOLN NEBRASKA 68507

Mailing Address: P.O. BOX 29798  
LINCOLN, NEBRASKA 68529

402•434•9140  
FAX 402•434•9160  
[www.lincolnmachine.com](http://www.lincolnmachine.com)



# Facilities List

## **QUALITY ASSURANCE EQUIPMENT**

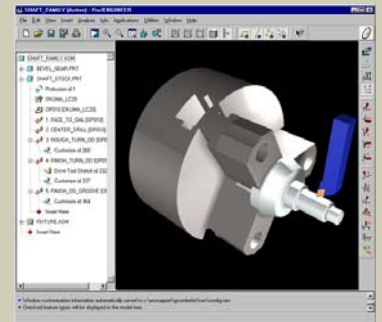
- Various Precision Instruments and Gauges
- 1 14" Optical Comparator
- 1 Toolmaker Microscope
- 1 Hardness Tester
- 3 Sets Precision Gauge Blocks
- 4 Sets of Precision Gage Pins
- 1 STARRETT Micrometer Set to 42"

## **MISCELLANEOUS EQUIPMENT**

- 14 Punch Presses, 5 to 45 Ton
- Multiple Band Saws of Various Capacities
- 1 Hydraulic Press 75-Ton Max. Capacity
- 2 Bench Brake, 48" Bed
- 1 Plate Saw, 3" thick by 8' long Aluminum

## **SECONDARY FINISHING EQUIPMENT**

- Various Polishing, Tumbling, and Deburring equipment
- 2 Heat Treating Furnaces
- 1 Bead Blast Cabinet



Main Plant: 6401 CORNHUSKER HWY.  
LINCOLN NEBRASKA 68507

402•434•9140  
FAX 402•434•9160  
[www.lincolnmachine.com](http://www.lincolnmachine.com)

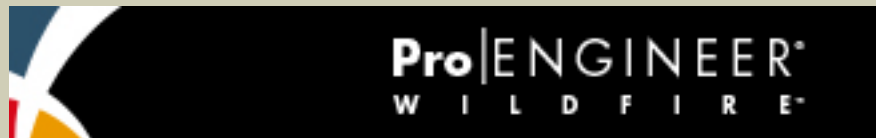
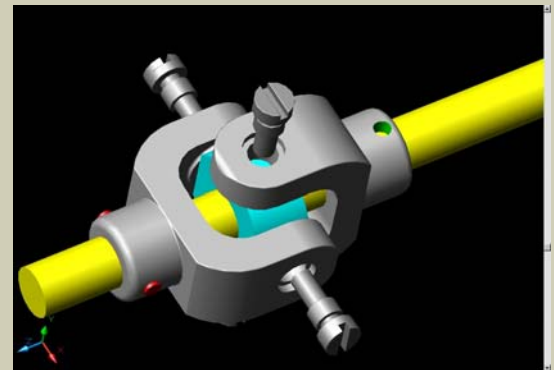
Mailing Address: P.O. BOX 29798  
LINCOLN, NEBRASKA 68529



# Facilities List

## DESIGN SOFTWARE - CAD/CAM

- PRO/ENGINEERING WildFire,2001, 2000i<sup>2</sup>
- AUTOCAD 2000
- SolidWorks 2006
- UNIGRAPHICS Solid Edge Version 5.5
- MASTERCAM Mill 3 Axis Version 9.1 and X
- MASTERCAM Wire 4 Axis Version 9.1 and X
- GibbsCAM Rotary Mill/Turn v 7.7
- Rhinoceros 3.0



Main Plant: 6401 CORNHUSKER HWY.  
LINCOLN NEBRASKA 68507

Mailing Address: P.O. BOX 29798  
LINCOLN, NEBRASKA 68529

402•434•9140  
FAX 402•434•9160  
[www.lincolnmachine.com](http://www.lincolnmachine.com)